

DynamicRoll® FRIGO 2

A dual curtain high-speed roll up door preventing condensation and ice buildup.



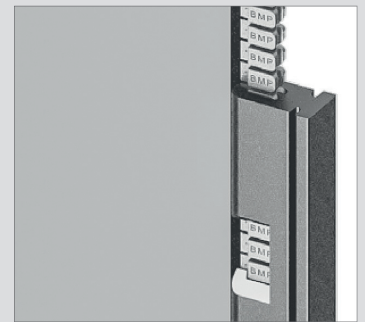
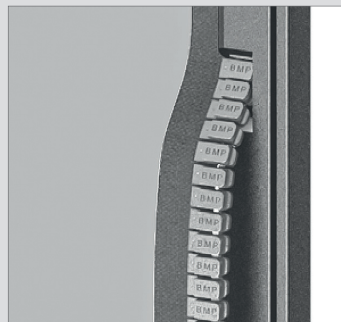
HIGH
SPEED
DOORS

DynamicRoll® FRIGO 2

DynamicRoll® **FRIGO 2** high-speed soft bottom edge doors are fast, safe, and self-reinserting. At the heart of the DynamicRoll® **FRIGO 2** is our innovative dual curtain design. When closed, the two curtains create a dead air space into which a small amount of warm air is introduced. This allows the curtains to remain condensation and frost free with minimal energy expense. It also allows it to be mounted on either the warm or cold side of the opening.

SELF-REINSERTING GUIDE

The door features a patented system consisting of an articulating high-density polyethylene inner guide and reinsertion slots. The curtain's full length zipper profile is encapsulated in the guide profile. This design provides a superior seal, smooth operation, and eliminates the need for lubrication. The system allows the curtain to release from the inner guide and automatically reinsert itself in the event of an accidental impact, minimizing down-time and costly repairs.



FEATURES AND BENEFITS

FAST



- Smooth traffic flow
- Reduces convection to minimize energy losses
- Safe for users & goods

RELIABLE



- Minimize down-time
- Minimize maintenance

DOUBLE CURTAIN



- Suitable for areas with high temp difference
- Suitable for areas with high humidity

DEAD AIR SPACE



- Eliminates condensation
- Eliminates frost

SAFE



- No rigid elements
- Self-reinserting system

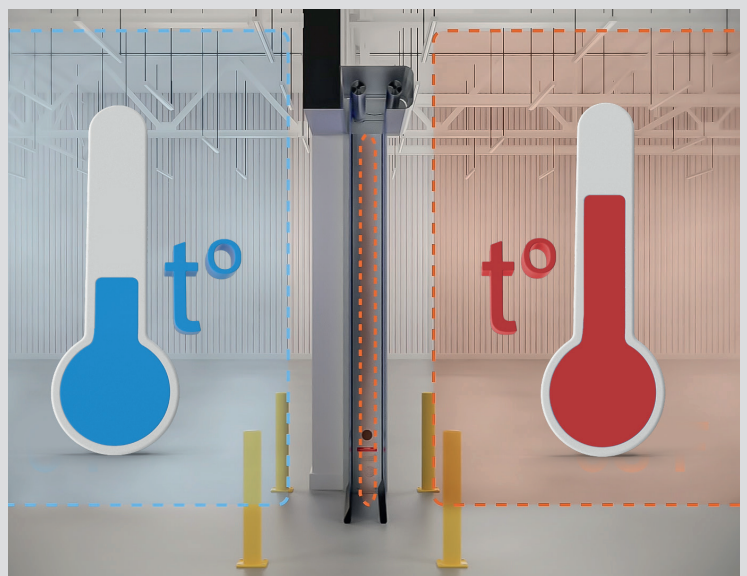


Scan this QR-code
to view a video



FROST FREE CURTAIN

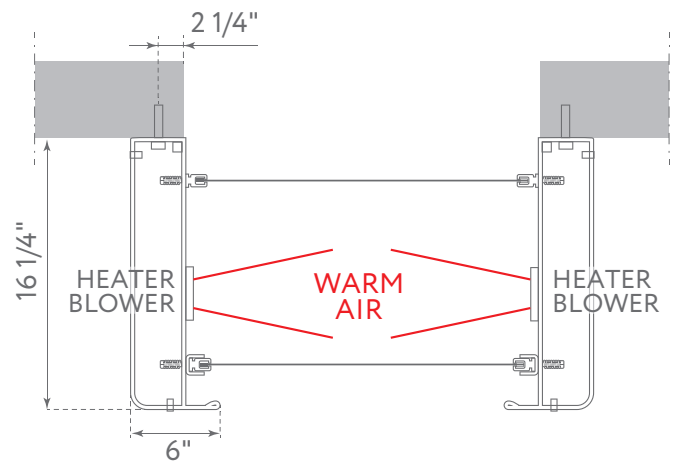
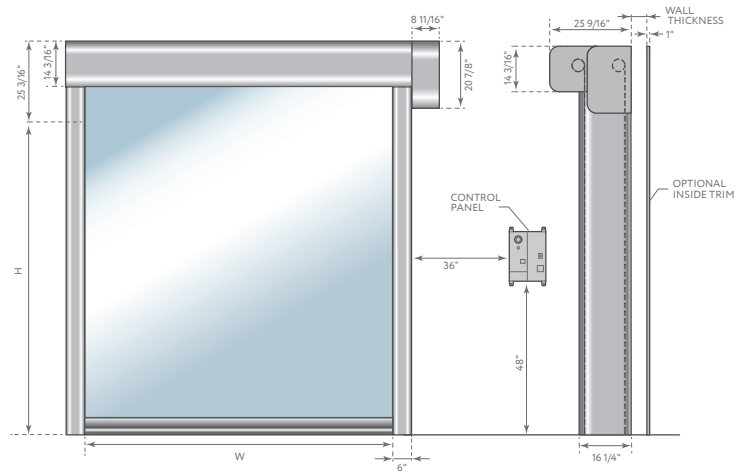
The DynamicRoll® Frigo 2 is equipped with a dual curtain. A unique warm air introduction system keeps the air between the two curtains conditioned to prevent condensation and frost on the curtains.



TECHNICAL DATA

MAXIMUM DIMENSIONS	W 14'-0" x H 17'-0"
SPEED	Max. opening speed: up to 100 in/sec
	Closing speed: 30 in/sec
CYCLES TEST	1,000,000
WIND RESISTANCE	Interior Applications Class 2 (450Pa / 9.4psf)
FRAME / MOTOR COVER HOOD	STANDARD - Galvanized steel
	OPTIONAL - Stainless steel 304 or 316
CURTAIN	STANDARD - 27 oz/yd ²
VERTICAL GUIDE MATERIAL	Patented system composed of a high density polyzene self-lubricating guide and full-length zipper profiles on the curtains.
POWER SUPPLY	3 phase 208-230-460vac -50/60hz
SAFETIES	STANDARD - Photocell set - Unroll sensor - Wireless safety edge
	EMERGENCY OPENING
	OPTIONAL - UPS battery
HEATING-KIT	A: Heated electrical and mechanical components (30W per linear meter)
	B: Heater in air space with warm air blower 5 kW max
THERMAL TRANSMISSION	2.2 W m ² k (0.39 btu/hr-ft ² -f)

DOOR SPACE REQUIREMENTS



OPTIONAL ACCESSORIES

RADAR



INFRARED RADAR
motion and presence
(pedestrian/forklift) radar



INFRARED RADAR
with cross-movement
adjustment

TRAFFIC LIGHTS

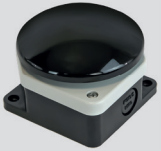


LED TRAFFIC LIGHT
red/green with countdown

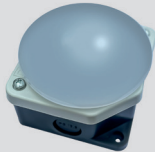


LED LIGHT BAR SYSTEM
with red moving/green open

BUTTONS



MUSHROOM PUSH BUTTON
with IP65 housing



LED PUSH BUTTON
red/green

OTHER



REMOTE
CONTROL



MAGNETIC
LOOP
DETECTOR



PULL CORD
SWITCH



BOLLARD
B-PROTECT

CHARACTERISTICS BY DATASHEET



Scan the QR-codes to view or download datasheets

Technical information about
standard pvc



Technical information about
insulated pvc

AVAILABLE CURTAIN COLORS

STANDARD PVC



RAL 9010
WHITE



RAL 1003
YELLOW



RAL 2004
ORANGE



RAL 3002
RED



RAL 6026
GREEN



RAL 7037
DUSTY GREY



RAL 7035
LIGHT GREY



RAL 5002
DARK BLUE



RAL 8017
BROWN



RAL 9005
BLACK

INSULATED PVC



RAL 9010
WHITE



RAL 5002
DARK BLUE

FDA CERTIFIED PVC



RAL 9010
WHITE



BMP USA, LLC reserves the right to change the properties of its products or components without notice, subject to its policy of continuous product development. The doors shown are example applications. No part or extract may be reproduced without our prior permission.



**HIGH
SPEED
DOORS**

4816 Zane A Miller Drive
Waynesboro, PA 17268 (USA)
tel: (800) 390-1086
www.bmpdoors.us