

DynamicRoll® FRIGO 2 AIR

A unique high-speed rollup door with additional AIR curtain designed for high traffic cold storage applications.



HIGH
SPEED
DOORS

DynamicRoll® FRIGO 2 AIR

DynamicRoll® **FRIGO 2 AIR** high-speed soft bottom edge doors are fast, safe, and self-reinserting. At the heart of the DynamicRoll® **FRIGO 2 AIR** is our innovative dual curtain design. When closed, the two curtains create a dead air space into which a small amount of warm air is introduced. This allows the curtains to remain condensation and frost free with minimal energy expense. It also allows it to be mounted on either the warm or cold side of the opening. The addition of the horizontal air curtain system minimizes convection induced air transfer making this door ideal for larger and higher traffic openings.

FEATURES AND BENEFITS



FAST

- Reduces convection
- Safe for users & goods



RELIABLE

- Minimize down-time
- Minimize maintenance



AIR CURTAIN

- Saves energy
- Minimizes warm/cold air exchange
- Minimizes uncontrolled humidity exchange



DOUBLE CURTAIN

- Suitable for areas with high temp difference
- Suitable for areas with high humidity



DEAD AIR SPACE

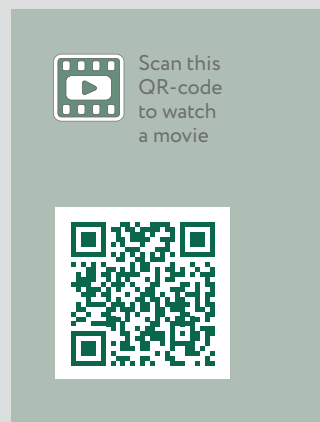
- Eliminates condensation
- Eliminates frost

AIR CURTAIN SYSTEM

The air curtain system is recommended for separating high-traffic areas or spaces with differing temperatures and humidity levels. With a dual-sided design that recirculates air across the doorway, it effectively maintains the separation between the two areas.

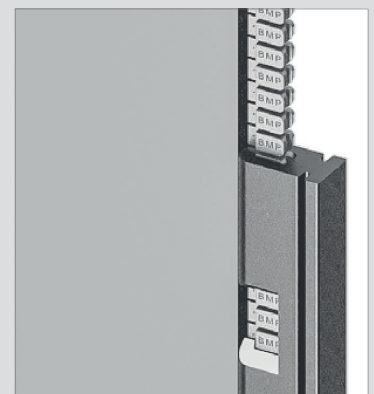
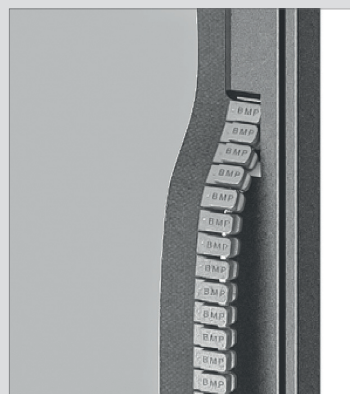
DynamicRoll® **FRIGO 2 AIR** is ideal for:

- Refrigeration industry
- Managing large temperature and humidity variations
- High traffic openings



SELF-REINSERTING SIDE GUIDES

The door features a patented system consisting of an articulating polyethylene inner guide and reinsertion slots. The curtain's full length zipper profile is encapsulated in the guide profile. This design provides a superior seal, smooth operations, and eliminates the needs for lubrication. The system allows the curtain to release from the inner guide and automatically reinserts itself in the event of an accidental impact, minimizing down-time and costly repairs.

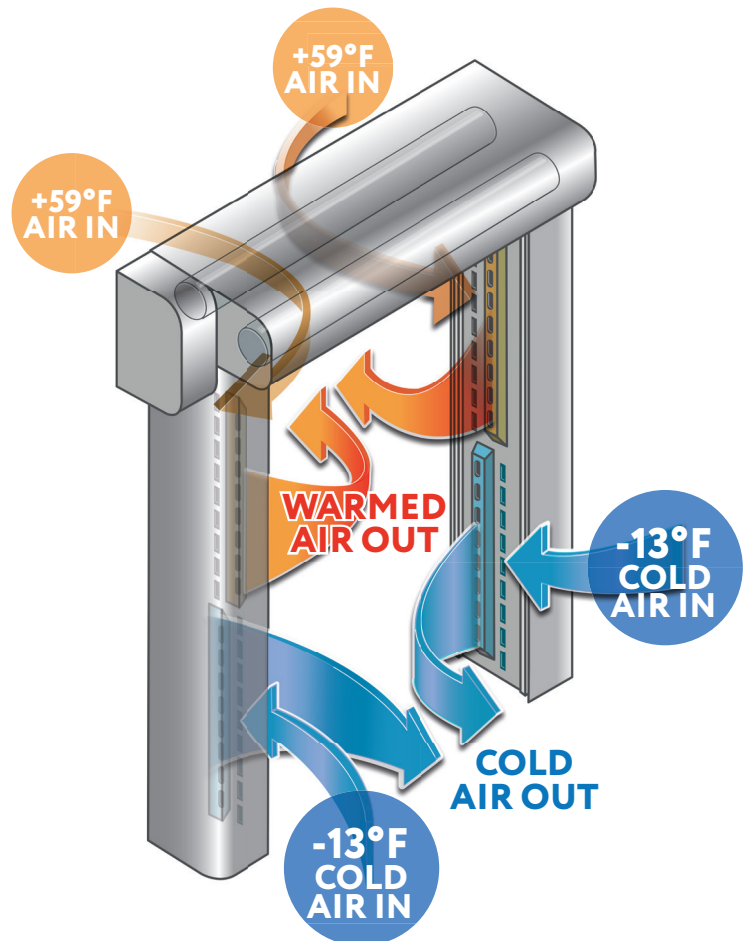
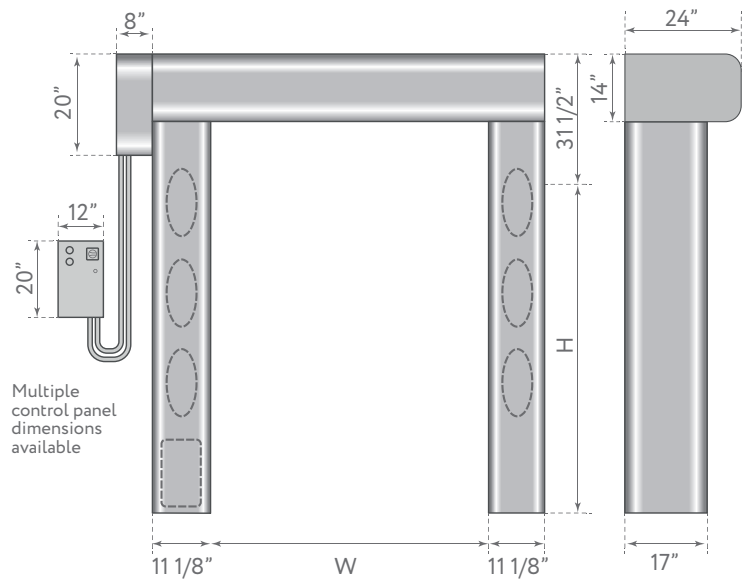


TECHNICAL DATA

MAXIMUM DIMENSIONS*	W 13' x H 16'
SPEED	Max. opening speed: up to 70 in/sec
	Closing speed: 32 in/sec adjustable
CYCLES TEST	1.000.000
WIND RESISTANCE	Class 2 (450pa / 9,4 psf)
STRUCTURE	Not self-supporting
FRAME / MOTOR COVER HOOD	STANDARD - Galvanized steel
	OPTIONAL - Stainless steel 304
CURTAIN	STANDARD - 27 yd ²
	OPTIONAL - Insulated 1/4" (7 mm) - FDA White (44 oz/yd ²)
VERTICAL GUIDE MATERIAL lubrication-free	Patented retention system with high-density polyethylene self-lubricating track system
AIR FLOW OF AIR SYSTEM	33 ft/sec
CONTROL PANEL	STANDARD - NEMA 4 painted steel
	OPTIONAL - NEMA 4x - Stainless steel - Composite
INCOMING POWER	208vac / 3 ph / 60hz
	230vac / 3 ph / 60hz
	460vac / 3 ph / 60hz
WIRING	Plug and Play system
SAFETIES	STANDARD - Photocells set - Anti-roll sensor - Wifi safety edge
	OPTIONAL - Multi ray light curtain barrier
EMERGENCY OPENING	STANDARD - Hand crank
	OPTIONAL - UPS battery
HEATING KIT	A: Heater on electrical components and mechanical, heating cable 9.15 KW per ft.
	B: Heater in air space with warm air blower 2.35 KW max.

* Larger dimensions require approval

DOOR SPACE REQUIREMENTS



OPTIONAL ACCESSORIES

RADAR



INFRARED RADAR
motion and presence
(pedestrian/forklift) radar

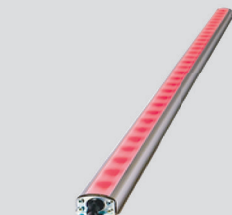


INFRARED RADAR
with cross-movement
adjustment

TRAFFIC LIGHTS

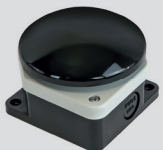


LED TRAFFIC LIGHT
red/green with countdown

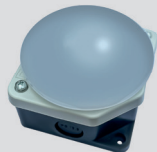


LED LIGHT BAR SYSTEM
with red moving/green open

BUTTONS



MUSHROOM PUSH BUTTON
with IP65 housing



LED PUSH BUTTON
red/green

OTHER



REMOTE
CONTROL



MAGNETIC
LOOP
DETECTOR









PULL CORD
SWITCH



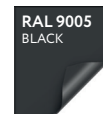
BOLLARD
B-PROTECT

CHARACTERISTICS BY DATASHEET

 Scan the QR-codes to view or download datasheets	
	Technical information about standard pvc 
	Technical information about insulated pvc 
	Technical information about FDA certificated pvc (Food Drug Administration) 

AVAILABLE CURTAIN COLORS

STANDARD PVC



INSULATED PVC



FDA CERTIFIED PVC



BMP USA, LLC reserves the right to change the properties of its products or components without notice, subject to its policy of continuous product development. The doors shown are example applications. No part or extract may be reproduced without our prior permission.



HIGH
SPEED
DOORS

4816 Zane A Miller Drive
Waynesboro, PA 17268 (USA)
tel: (888) 822-3667
www.bmpdoors.us