

DynamicRoll® 90

FOOD STAINLESS

The Food Stainless is specially designed for the food industry with explicit attention to hygiene.



HIGH
DISH
DOORS

DynamicRoll® 90 FOOD STAINLESS

The DynamicRoll® **FOOD STAINLESS** is built on the same proven platform as our standard DynamicRoll door with a self-reinserting curtain with a flexible bottom edge for safety and impact forgiveness. Complete with stainless steel components this door is designed to meet the strict requirements of the food industry and other wash down environments.

APPLICATIONS



FEATURES AND BENEFITS

FAST



- Smooth traffic flow
- Reduces convection to minimize energy losses
- Safe for users & goods

RELIABLE



- Minimize down-time
- Minimize maintenance

SUPERIOR PERIMETER SEALING



- Reduces air infiltration and exchange
- Easy to clean

SAFE



- No rigid elements
- Self-reinserting system

WASH DOWN



- Ease of cleaning

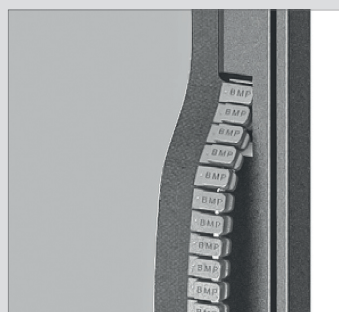


Scan this QR-code to view a video



SELF-REINSERTING GUIDE

The door features a patented system consisting of an articulating high-density polyethylene inner guide and reinsertion slots. The curtain's full length zipper profile is encapsulated in the guide profile. This design provides a superior seal, smooth operation, and eliminates the need for lubrication. The system allows the curtain to release from the inner guide and automatically reinsert itself in the event of an accidental impact, minimizing down-time and costly repairs.

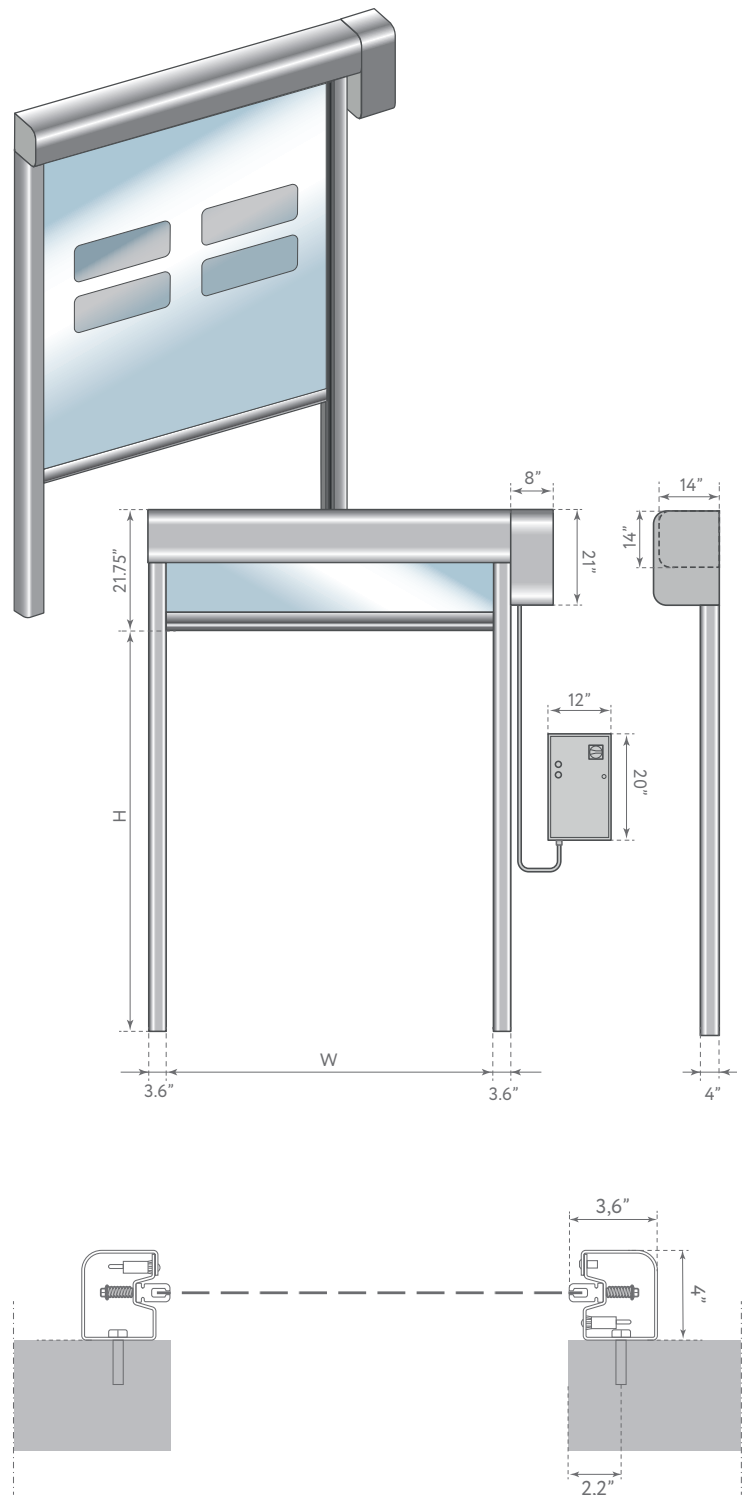


TECHNICAL DATA

MAXIMUM DIMENSIONS^o	W 21'-4" x H 21'-4"
SPEED	Max opening speed: up to 100 in/s
	Closing speed: 32 in/s
CYCLES TEST	1,000,000
WIND RESISTANCE	9'-10" x 9'-10" Class 3 (700Pa/14.6psf)
	16'-5" x 16'-5" Class 2 (450Pa/9.4psf)
FRAME / MOTOR COVER HOOD	STANDARD - Stainless Steel 304
	OPTIONAL - Stainless steel 316
CURTAIN	STANDARD - 27 oz/yd ²
	OPTIONAL - Insulated 1/4" (7mm) - FDA 44 oz/yd ²
VERTICAL GUIDE MATERIAL	Patented retention system with a high-density polyethylene self-lubricating track system.
CONTROL PANEL	STANDARD - NEMA 4x Stainless Steel
	OPTIONAL - NEMA 4x Composite
INCOMING POWER	208vac/3ph/60hz
	230vac/3ph/60hz
	460vac/3ph/60hz
SAFETIES	STANDARD - Photo electric cells - Anti-roll reverse sensor
	OPTIONAL - Wireless safety edge
EMERGENCY OPENING	STANDARD - Hand crank
	OPTIONAL - Side Egress - UPS battery back up.
WORKING TEMPERATURE	-22 °F with additional heating kit Not apt to be installed in negative to positive temperature conditions.

^o Larger dimensions require approval

DOOR SPACE REQUIREMENTS



DynamicRoll® 90 FOOD STAINLESS

OPTIONAL ACCESSORIES

RADAR



INFRARED RADAR
motion and presence
(pedestrian/forklift) radar



INFRARED RADAR
with cross-movement
adjustment

TRAFFIC LIGHTS

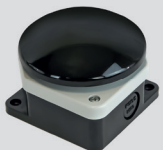


LED TRAFFIC LIGHT
red/green with countdown

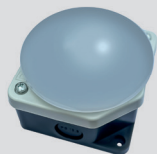


LED LIGHT BAR SYSTEM
with red moving/green open

BUTTONS



MUSHROOM PUSH BUTTON
with IP65 housing



LED PUSH BUTTON
red/green

OTHER



REMOTE
CONTROL



MAGNETIC
LOOP
DETECTOR



PULL CORD
SWITCH



BOLLARD
B-PROTECT

CURTAIN MATERIAL DATASHEET



Scan the QR-codes to view or download datasheets

Technical information about
standard pvc



Technical information about
insulated pvc



Technical information about
pvc windows



Technical information about
FDA certificated pvc
(Food Drug Administration)

AVAILABLE CURTAIN COLORS

STANDARD PVC



RAL 9010
WHITE



RAL 1003
YELLOW



RAL 2004
ORANGE



RAL 3002
RED



RAL 6026
GREEN



RAL 7037
DUSTY GREY



RAL 7035
LIGHT GREY



RAL 5002
DARK BLUE



RAL 8017
BROWN



RAL 9005
BLACK

INSULATED PVC



RAL 9010
WHITE



RAL 5002
DARK BLUE

FDA CERTIFIED PVC



RAL 9010
WHITE

BMP USA, LLC reserves the right to change the properties of its products or components without notice, subject to its policy of continuous product development. The doors shown are example applications. No part or extract may be reproduced without our prior permission.



HIGH
SPEED
DOORS

4816 Zane A Miller Drive
Waynesboro, PA 17268 (USA)
tel: (800) 390-1086
www.bmpdoors.us