

DynamicRoll®

CLEANROOM CB 125

The certified cleanroom door for efficient access in high-care environments.



HIGH
SPEED
DOORS



DynamicRoll®

CLEANROOM CB 125

The DynamicRoll **CLEANROOM CB 125** is a high-speed, high-performance roll-up door system designed to separate over pressured sterile environments. Due to its superior sealing capability, the CB 125 ensures controlled pressure air leakage, allowing the ventilation and air purification systems to operate most efficiently.

The DynamicRoll **CLEANROOM CB 125** door system provides a unique blend of functionality, aesthetic appeal, and peace of mind. It is an ideal environmental separation barrier for facilities prioritizing hygiene and environmental control.



FEATURES AND BENEFITS



CLEAN

- Minimal seams and fasteners = easy to clean and wipe down



ENERGY EFFICIENT

- High-speed
- Tight seals
- High-pressure capability
- Reduces air infiltration exchange



SAFE

- No rigid elements
- Self-reinserting system




RELIABLE

- Minimize down-time
- Minimize maintenance




STAINLESS STEEL STRUCTURE



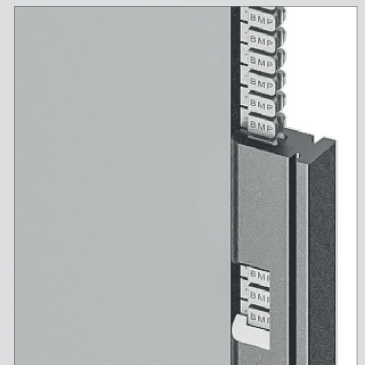
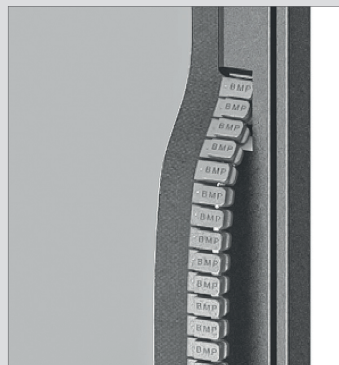
50 PASCAL TEST

Scan this QR-code to watch a movie



SELF-REINSERTING GUIDE

The door features a patented system consisting of an articulating high-density polyethylene inner guide and reinsertion slots. The curtain's full length zipper profile is encapsulated in the guide profile. This design provides a superior seal, smooth operation, and eliminates the need for lubrication. The system allows the curtain to release from the inner guide and automatically reinsert itself in the event of an accidental impact, minimizing down-time and costly repairs.



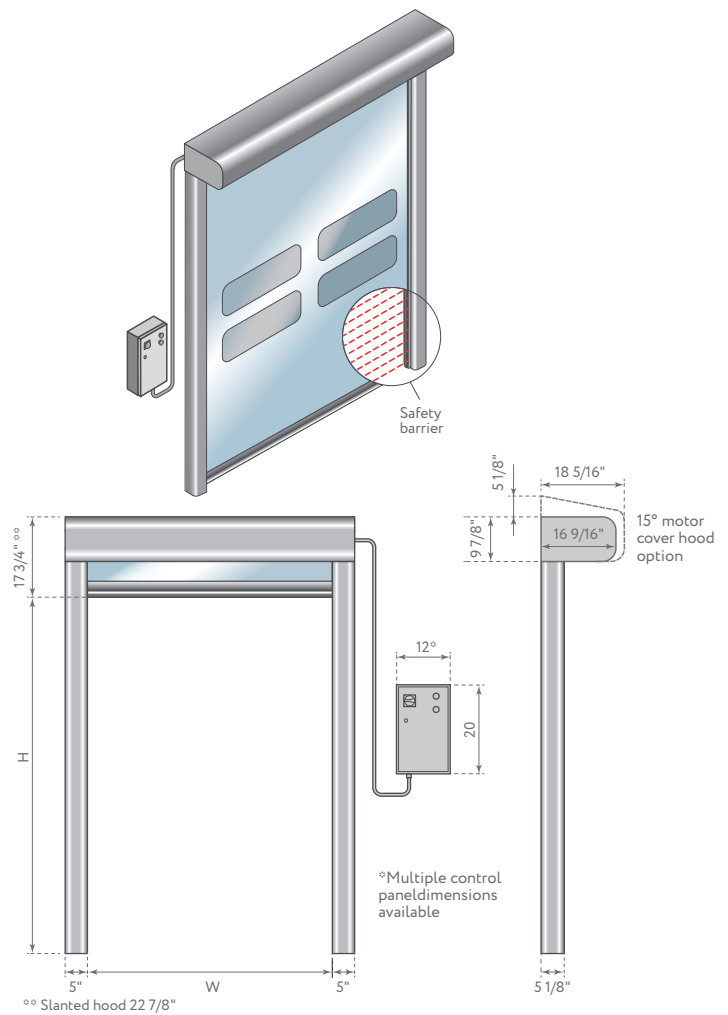
TECHNICAL DATA

MAXIMUM DIMENSIONS*	W 13' x H 13'
SPEED	Max. opening speed: 100 in/sec
	Closing speed: 32 in/sec
CYCLES TEST	1.000.000
WIND RESISTANCE	STANDARD Class 2
	OPTIONAL Class 5 with patented magnetic system
STRUCTURE	Not self-supporting
FRAME / MOTOR COVER HOOD	STANDARD - Galvanized steel
	OPTIONAL - Stainless steel
CURTAIN	STANDARD - 27 oz/yd ²
	OPTIONAL - Insulated 1/4" (7mm) - FDA White (44 oz/yd ²)
VERTICAL GUIDE MATERIAL lubricant-free	Patented retention system with high density polyethylene self-lubricating track system
CONTROL PANEL	STANDARD NEMA 1 (12 in x 20 in x 6 in)
	OPTIONAL - Stainless steel - PVC box NEMA 4X (12 in x 20 in x 6 in)
	Inverter system 50/60 Hz with absolute encoder
	Start/stop button
	2 free contacts (door open/closed/alarm)
	Available interlocking between 2 doors
	NEMA 4X panels and IP65 motors available
INCOMING POWER	Power supply 3-ph, 208V
	Power supply 3-ph, 230V
	Power supply 3-ph, 460V
WIRING	Plug and Play system
SAFETIES	STANDARD - Photocells set - Un-roll sensor - WiFi safety edge
	OPTIONAL - Multi ray light curtain barrier
EMERGENCY OPENING	STANDARD - Mechanical key
	OPTIONAL - UPS battery
ADVISED OPERATING TEMPERATURE & HUMIDITY	Operating till 14°F ** with heating kit added - Not apt to be installed in negative/positive temperature

*Larger dimensions require approval

** System on demand due to possible change air permeability values

DOOR SPACE REQUIREMENTS



FIXING DETAILS



EN 13241 CERTIFICATION

STANDARD	RIF.	TEST ACC.	RESULTS
WATER PERMEABILITY	EN 12425	EN 12489	Class 1
WIND LOAD	EN 12424	EN 12444	Class 3
WIND PERMEABILITY	EN 12426	EN 12427	Class 2
			Class 5 with patented magnetic system
SAFE OPENINGS	EN 12453	EN 12445	-
MECHANICAL RESISTANCE	EN 12604	EN 12605	-
UNINTENDED MOVEMENTS	EN 12604	EN 12605	-
THERMAL TRANSMITTANCE	EN 12428	EN 12428	6,02 W/m ² K
PERFORMANCE (CYCLES)	EN 12604	EN 12605	1.000.000

Values can change depending on door dimensions

OPTIONAL ACCESSORIES

RADAR



INFRARED RADAR
motion and presence
(pedestrian/forklift) radar



INFRARED RADAR
with cross-movement
adjustment

TRAFFIC LIGHTS

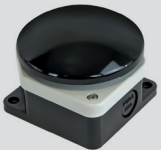


LED TRAFFIC LIGHT
red/green with countdown

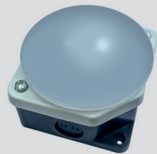


LED LIGHT BAR SYSTEM
with red moving/green open

BUTTONS



MUSHROOM PUSH BUTTON
with IP65 housing



LED PUSH BUTTON
red/green

OTHER



REMOTE
CONTROL



MAGNETIC
LOOP
DETECTOR












PULL CORD
SWITCH



BOLLARD
B-PROTECT

CHARACTERISTICS BY DATASHEET

 Scan the QR-codes to watch or download datasheets	
	Technical information about standard pvc 
	Technical information about insulated pvc 
	Technical information about FDA certificated pvc (Food Drug Administration) 
	Technical information about pvc windows cristal superclear 

AVAILABLE CURTAIN COLORS

STANDARD PVC



INSULATED PVC



FDA CERTIFIED PVC



BMP USA, LLC reserves the right to change the properties of its products or components without notice, subject to its policy of continuous product development. The doors shown are example applications. No part or extract may be reproduced without our prior permission.



4816 Zane A Miller Drive
Waynesboro, PA 17268 (USA)
tel: (800) 390-1086
www.bmpdoors.us