

# DynamicRoll® B-DRIVE

A wind-resistant door perfectly suited for a variety of interior and exterior applications.



HIGH  
SPEED  
DOORS

# DynamicRoll® B-DRIVE

With the **DynamicRoll® B-DRIVE** door, you can rely on self-reinserting system that offers exceptional wind resistance of up to 102 mph. These doors excel in high traffic interior and exterior openings, thanks to the high speed achieved from a gear-driven system that propels the curtain in both directions.

The innovative design incorporates patented guides, consisting of self-lubricating high density polyethylene, that are sprung to articulate with both positive and negative pressures.

The exceptional perimeter seal, high overall cycle speed, and self-inserting system combine to achieve a very low total cost of ownership and rapid return on investment.

## FEATURES AND BENEFITS



### FAST

- Smooth traffic flow
- Minimize energy losses



### RELIABLE

- Minimize down-time
- Minimize maintenance



### SUPERIOR PERIMETER SEAL

- Reduces air infiltration and exchange
- High wind resistance



### SAFE

- No rigid elements
- Self-reinserting system

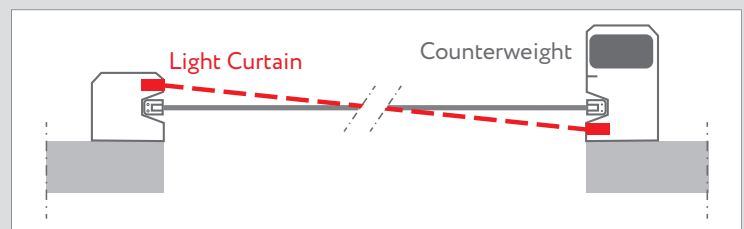
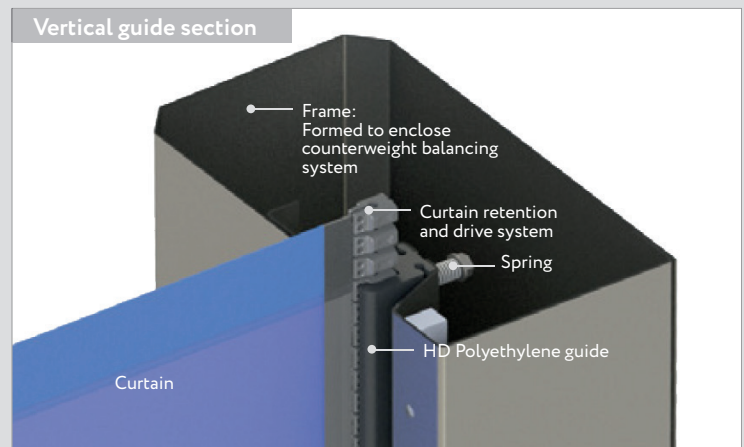


### HIGH PERFORMANCE

- Robust
- Quiet operation

## COUNTERBALANCE SYSTEM counterweight

The collection drum is connected to a counterweight balancing system that maintains tension for the drum to collect the curtain as it is being driven up and down.



## WIND RESISTANCE



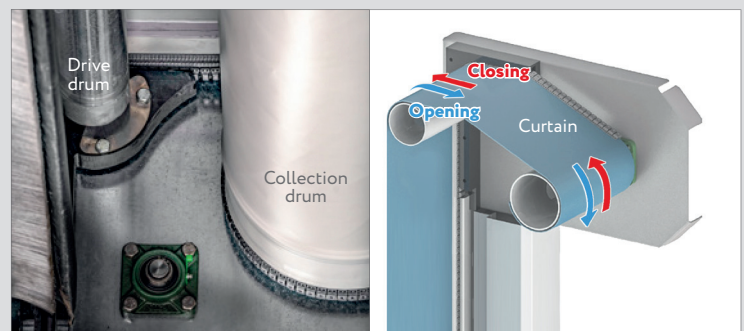
Scan this QR-code to view a video about wind resistance



## GEAR DRIVEN CURTAIN & COLLECTION SYSTEM



Scan this QR-code to view a video about the drive system and curtain collection



## TECHNICAL DATA

MAX OPENING DIMENSIONS*	W 32'-9" x H 19'-6"
SPEED	Up to 118 in/s
WIND LOAD** DIFFERENTIAL PRESSURE	< 16'-4": Class 5 (>1000Pa/20psf) > 16'-4" to 21'-4": Class 4 (1000Pa/20psf) > 21'-4" to 26'-3": Class 3 (700Pa/14.6psf) over 26'-3": Class 2 (450Pa/9.4psf)
DOOR OPERATION WITH WIND LOAD	Up to 62mph or 100 km/h
FRAME	- Galvanized steel - Stainless steel - Powder coated
CURTAIN	<b>STANDARD</b> - 27 oz/yd <sup>2</sup>  <b>OPTIONAL</b> - Insulated 1/4" (7mm) - FDA White (44 oz/yd <sup>2</sup> )
WINDOWS	Anti UV transparent PVC 0.04" (1 mm) thickness
VERTICAL GUIDES MATERIAL	Outer guide galvanized steel Inner guide polyethylene
MOTOR	Direct drive with worm gearboxes
SAFETY	Infrared light curtain (UL325:2012)
POWER SUPPLY	3 phase 208-230-460-575 VAC - 50/60Hz
SELF-REINSERTING	Instantaneous at the point of release of the curtain
WORKING TEMPERATURE	-22° to 158° F (-30°/+70° C)**
SOUND INSULATION STANDARD	18 db (Rw) ****
WATER RESISTANCE	Class 3: EN12425 : >50Pa (>1psf)
AIR PERMEABILITY	Class 1: 24m <sup>3</sup> /h/m <sup>2</sup> (14ft <sup>3</sup> /min/ft <sup>2</sup> )
THERMAL TRANSMISSION	Standard: 5.8 W m <sup>2</sup> k (1btu/hr-ft <sup>2</sup> -F) Insulated: 3.2 W m <sup>2</sup> k (0.56btu/hr-ft <sup>2</sup> -F)

\* Different sizes available per request

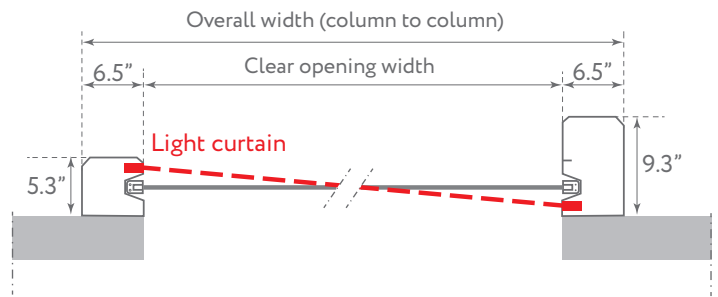
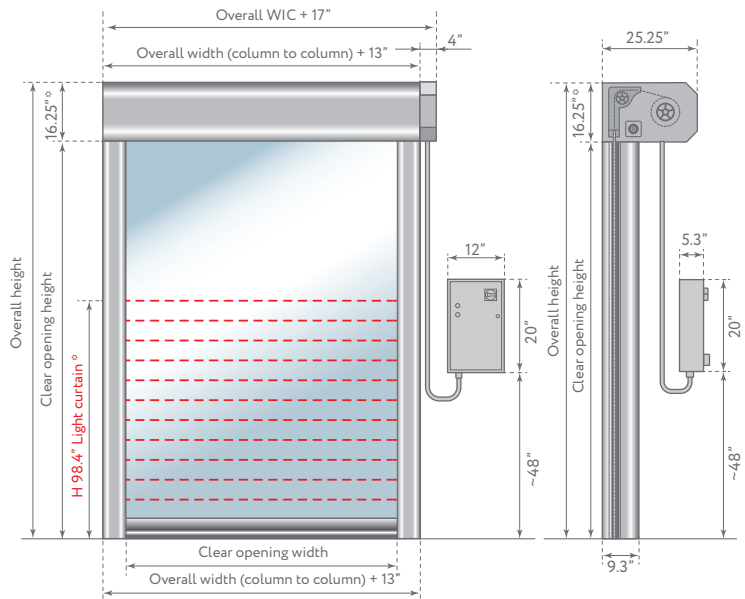
\*\* Higher resistance wind load per request

\*\*\* With optional heating packages

\*\*\*\* Dependent on frequency



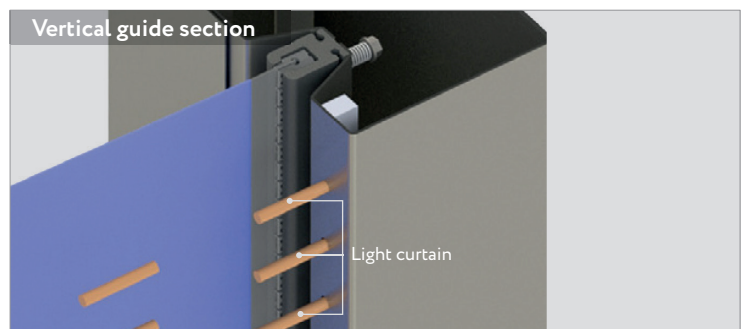
## DOOR SPACE REQUIREMENTS



° Dependent on door size

## LIGHT CURTAIN SAFETY SYSTEM

100 inches of vertical barrier to minimize the chance of the door closing onto personnel, product, or equipment. The light curtain is incorporated in the side guide with beams that cross through the opening, giving unrivaled protection.



## OPTIONAL ACCESSORIES

### RADAR



INFRARED RADAR  
motion and presence  
(pedestrian/forklift) radar

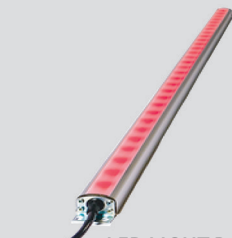


INFRARED RADAR  
with cross-movement  
adjustment

### TRAFFIC LIGHTS

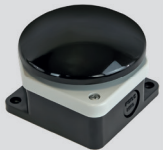


LED TRAFFIC LIGHT  
red/green with countdown

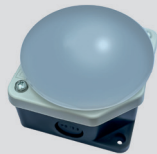


LED LIGHT BAR SYSTEM  
with red moving/green open

### BUTTONS



MUSHROOM PUSH BUTTON  
with IP65 housing



LED PUSH BUTTON  
red/green

### OTHER



REMOTE  
CONTROL



MAGNETIC  
LOOP  
DETECTOR



PULL CORD  
SWITCH



BOLLARD  
B-PROTECT

## CURTAIN MATERIAL DATASHEET



Scan the QR-codes to view or download datasheets

Technical information about  
standard pvc



Technical information about  
insulated pvc



Technical information about  
pvc windows

## AVAILABLE CURTAIN COLORS

### STANDARD PVC



RAL 9010  
WHITE



RAL 1003  
YELLOW



RAL 2004  
ORANGE



RAL 3002  
RED



RAL 6026  
GREEN



RAL 7037  
DUSTY GREY



RAL 7035  
LIGHT GREY



RAL 5002  
DARK BLUE



RAL 8017  
BROWN



RAL 9005  
BLACK

### INSULATED PVC



RAL 9010  
WHITE



RAL 5002  
DARK BLUE

### FDA CERTIFIED PVC



RAL 9010  
WHITE

### HEAVY DUTY PVC



RAL 5002  
DARK BLUE



RAL 7037  
DUSTY GREY

BMP USA, LLC reserves the right to change the properties of its products or components without notice, subject to its policy of continuous product development. The doors shown are example applications. No part or extract may be reproduced without our prior permission.



HIGH  
SPEED  
DOORS

4816 Zane A Miller Drive  
Waynesboro, PA 17268 (USA)  
tel: (800) 390-1086  
[www.bmpdoors.us](http://www.bmpdoors.us)